



Impera Link SETUP manual



Hit the Jackpot with Impera Link!

DIMENSIONS

Length:	12,8 cm
Width:	7,2 cm
Height:	2,2 cm



Please do not remove the cover.

Removing the cover will render the device inoperable.



Scan to access all Impera Link manuals.



CONNECTION

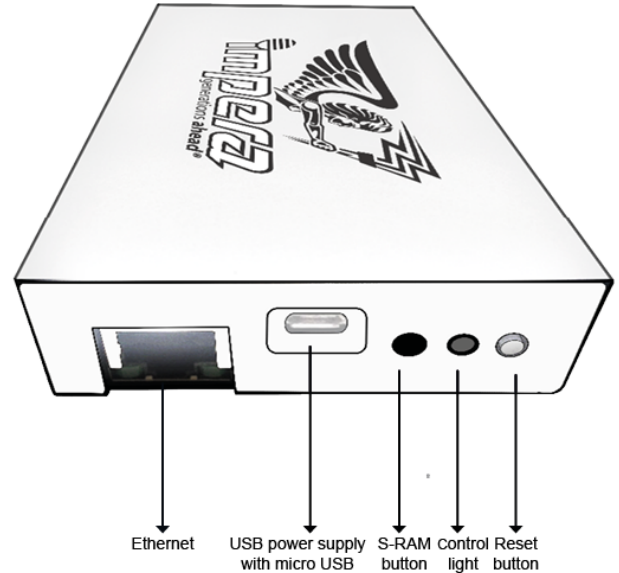
- ➔ Connect the **Impera Link** server via USB cable to the Backplane (or FireFox) of one of your **Impera Link** terminals.
- ➔ Connect the **Impera Link** server to a Switch.
- ➔ Connect all **Impera Link** terminals to this Switch.

When connecting the **Impera Link** server in your server room (from there to a switch and further to the terminals), a USB power supply 5V/ at least 500mA with micro-USB is needed. **The Impera Link settings can be conducted from each connected terminal ➔ SETUP SOFTWARE.**

SETUP PROCEDURE

- ➔ Turn on the terminal(s) with the **Impera Link** software.
- ➔ When the *Persistent storage error* page is displayed, proceed by connecting the **Impera Link** server.
- ➔ Connecting the **Impera Link** server:
 - When the **Impera Link** server is connected to the terminals, the Control light will change from **red** to **green or orange**.
- ➔ Now the terminal(s) can be “Initialized” ➔ **SETUP SOFTWARE.**

ALIGNMENT



CONTROL LIGHT

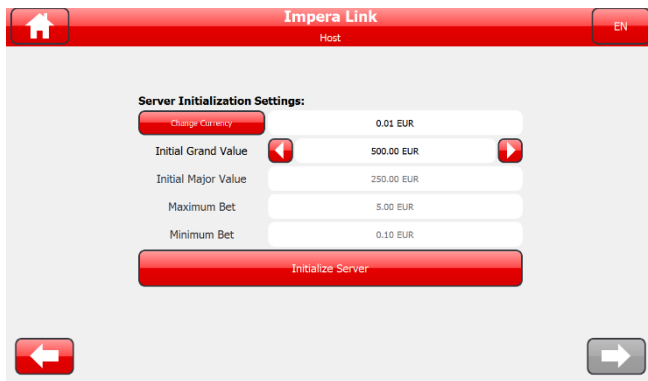
Red – not connected to the Impera Link terminals
Green or Orange – connected to the Impera Link terminals

TROUBLESHOOTING

If the Control light does not change from **red** to **green or orange** in 5 minutes, proceed by following these steps:

- ➊ **Check** the network connections. If the Control light remains **red** proceed to ➋.
- ➋ **Reset** the device by holding the **Reset button** for 5 seconds. If the Control light does not change from **red** to **green or orange** after 2 minutes, proceed to ➌.
- ➌ **Restart** the device (unplug the micro-USB cable), wait until the Control light turns off, reinsert the micro-USB cable into the device. The device should set up in 5 minutes.

SETUP SOFTWARE – Server Initialization Settings



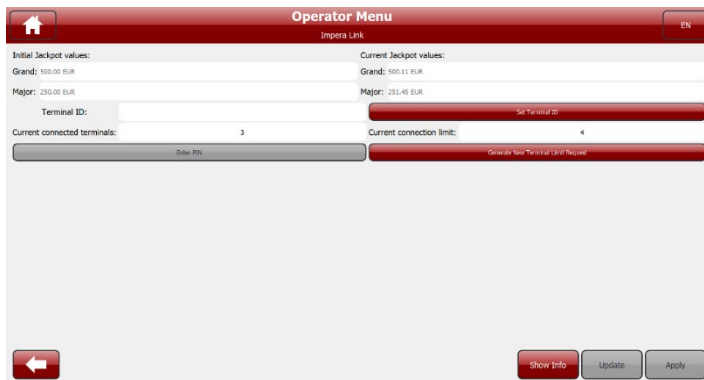
When the Impera Link Server device is connected to the terminal for the first time, **Server Initialization Settings** are shown.

To initialize Server, Server Currency needs to be set by pressing the button "Change Currency".



Initial Major Value, Maximum Bet and Minimum Bet are changed in accordance with the changes made in Initial Grand Value.

SETUP SOFTWARE – Operator Menu/Impera Link



➤ Terminal ID can be set to identify each connected terminal.

➤ Button "Generate New Terminal Limit Request": new Terminal Limit can be defined by contacting the support. Max. Terminal Limit 4, 8 or 12 is possible.



If Terminal Limit is set to 4 then 4, 3 or just 2 clients can be connected.

Upon request you need to enter a PIN by pressing the "Enter PIN (Pending Request)" button.

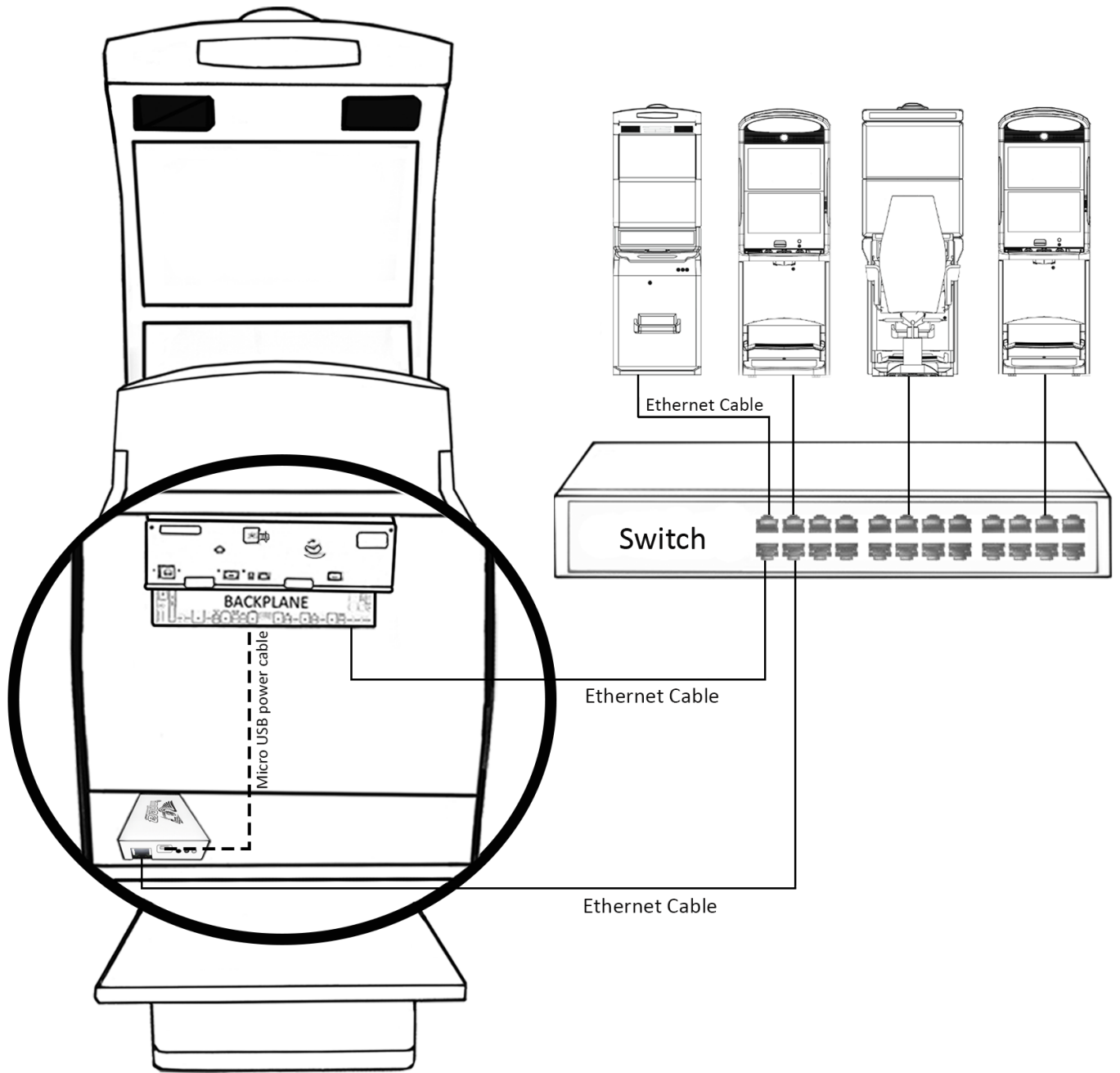
➤ By pressing the "Show Info" button, information like Impera Link Server version, Serial No. and the connected Terminals / Presentation Server can be seen.

➤ To activate the "Update" button, you need to trigger S_RAM Clear/Update Request by pressing the "S-RAM" button and the "Reset" button at the same time on the Impera Link Server device.



Please find more detailed info in the UPDATE Manual.





Please CONTACT YOUR TECHNICAL SUPPORT TEAM in case of any problems.