

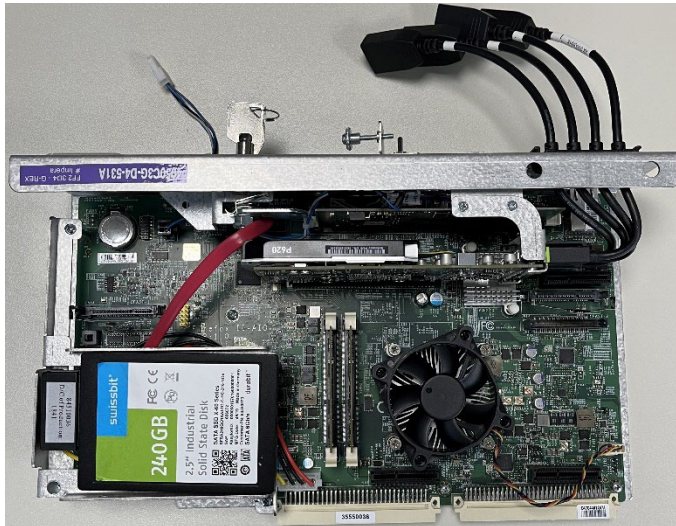
# USER MANUAL

## SD 1.0

(rev 1.1)



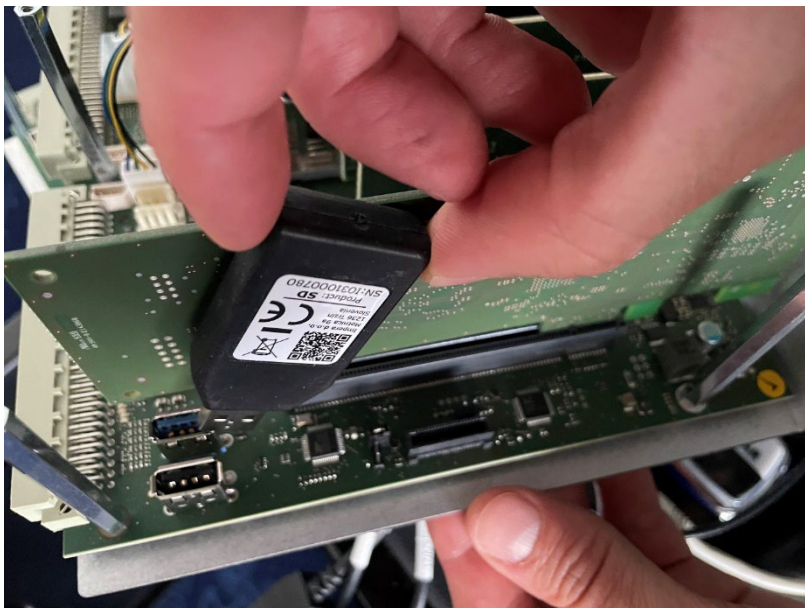
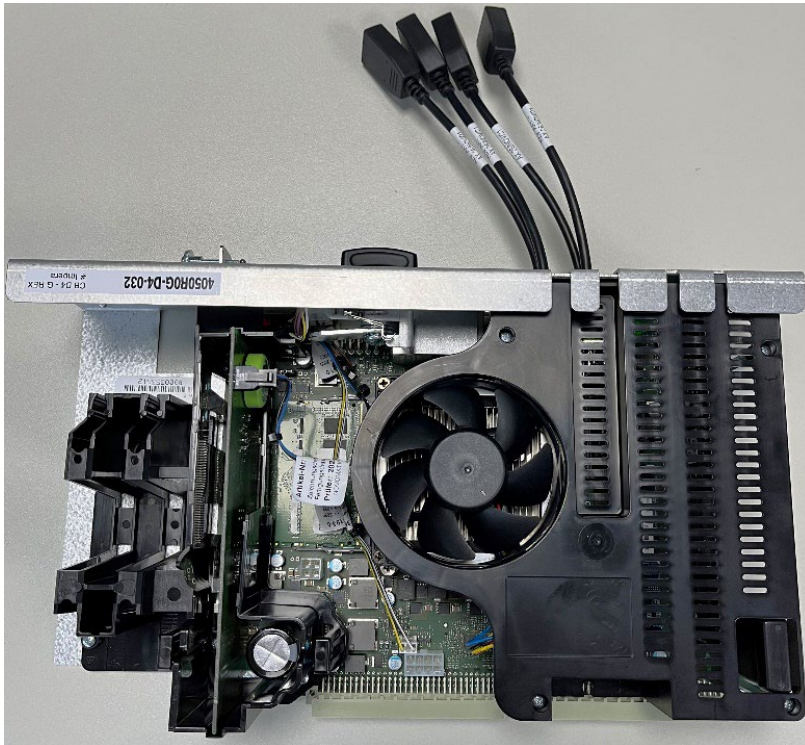
## 1. Position in FireFox Unit

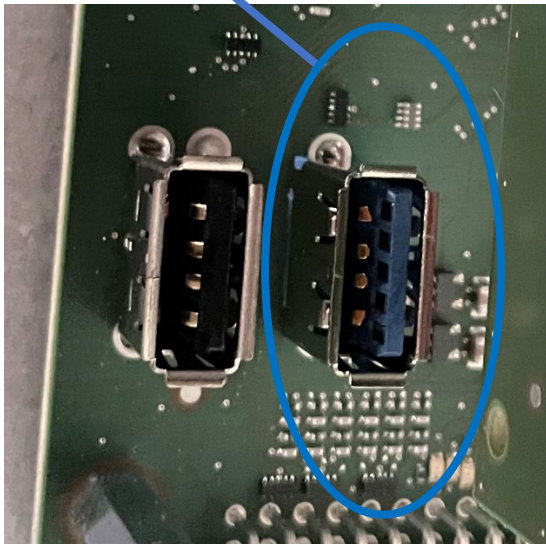


## 2. Position in Cobra Unit



It is strongly recommended to use the **USB 3.0 port** on the Cobra platform to connect the SD.





If the USB port is **blue**,  
it is a **USB 3.0** port.

Revision history

Document Revision	Date	Description	Remark
1.0	07/12/2022	Initial Release	
1.1	04/07/2023	Usage of USB 3.0 port	